

MAIN C.B.A. VEPS6070HJ (A) /VEPS6070HG (B) VEPS6070HC (C) /VEPS6070HF (D)

CAUTION: FOR CONTINUED PROTECTION AGAINST FIRE HAZARD,
REPLACE ONLY WITH THE SAME TYPE 1.6A 125V FUSE.
ATTENTION: POUR UNE PROTECTION CONTINUE LES RISQUES
D'T INCENDIE N' UTILISERQUE DES FUSIBLE DE MÊME
TYPE 1.6A 125V



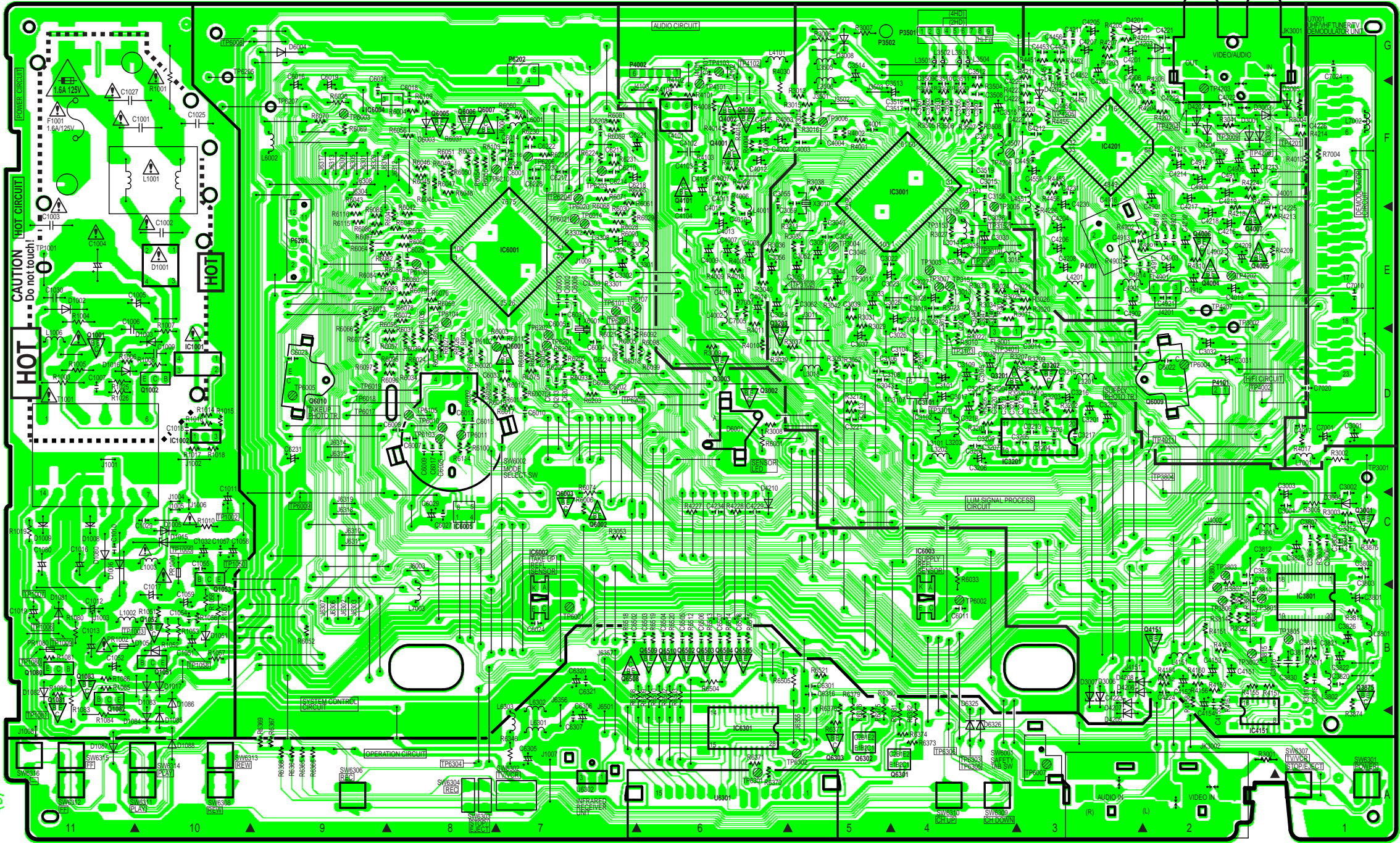
IMPORTANT SAFETY NOTICE:
COMPONENTS IDENTIFIED BY THE SIGN ⚠ HAVE
SPECIAL CHARACTERISTICS IMPORTANT FOR SAFETY.
WHEN REPLACING ANY OF THESE COMPONENTS,
USE ONLY THE SPECIFIED PARTS.

NOTE:
CIRCUIT BOARD LAYOUT SHOWS COMPONENTS INSTALLED FOR VARIOUS MODELS.
FOR PROPER PARTS CONTENT FOR THE MODEL YOU ARE SERVICING,
PLEASE REFER TO THE SCHEMATIC DIAGRAM AND PARTS LIST.

NOTE:
CIRCUIT BOARD LAYOUT INCLUDES COMPONENTS WHICH ARE NOT USED.

NOTE:
FOR SCHEMATIC DIAGRAM AND CIRCUIT BOARD LAYOUT NOTES,
REFER TO BEGINNING OF SCHEMATIC SECTION.

HOT CIRCUIT.BE CAREFUL AND USE AN ISOLATION TRANSFORMER WHEN SERVICING.



COMPARISON CHART
OF MODELS & MARKS

MODEL	MARK
PV-451-K	A
PV-V4531-K	B
-----	C
PV-V4601	D